

An Evaluation of Crime Prevention Through Environmental Design (CPTED)

Luke Senftle, Department of Criminology and Criminal Justice, University of Maryland

ABSTRACT

The prevalence of school shootings has resulted in a number of responses to prevent future events, many of which call upon changes to the structural features of the schools. Early approaches used harsh-target hardening techniques. This led to the rise of the use of other techniques such as Crime Prevention Through Environmental Design (CPTED). Despite increases in the use of different strategies, we know little about how these approaches impact perceptions of feeling safe. This research aims to bridge the gap between the understanding of the effectiveness of CPTED and Target Hardening, through the scope of perceptions or feelings of safety. This research investigates the differences between CPTED and Harsh Target Hardening. A qualitative study was created in the State of Maryland in Montgomery County Public Schools. Semi-structured interviews were conducted with K-5 elementary school teachers to gain insight into feelings of safety and input toward CPTED and Harsh Target Hardening practices. It was found that teachers appreciate tenets of both practices and that a quasi-approach that incorporates aspects of Crime Prevention Through Environmental Design (CPTED) and Harsh Target Hardening is appropriate.

CPTED and Harsh Target Hardening

- **Crime Prevention Through Environmental Design (CPTED)** is the use of the natural surroundings and design of the school to promote safety. This involves promoting more surveillance, having a secure access control system, territorial reinforcement (such as fences or walls), and maintaining a clean environment.
- **Harsh Target Hardening** is the use of purely physical means to promote school safety. This involves the use of Security Cameras, SRO Officers, Metal Detectors, and any other extraordinary physical means

Method

- A qualitative study was created using Montgomery County Public Schools
- Semi-structured interviews were conducted with K-5 public school teachers currently working in Montgomery County Public Schools
- After thematic analysis was conducted to reveal different domains

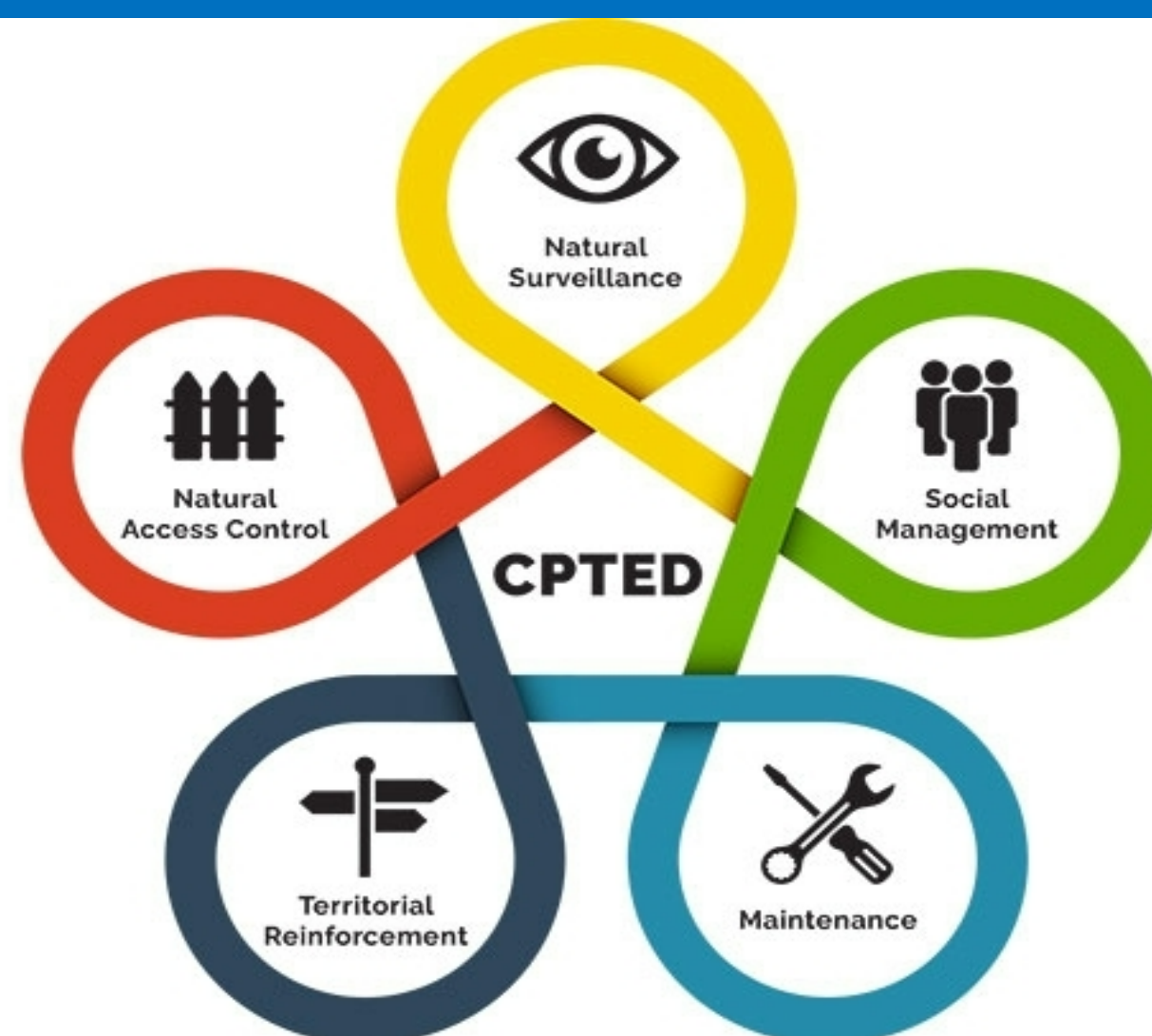
Implications

- This research supports a combination of school security approaches being used.
- In terms of CPTED teachers support the belief that more surveillance, better maintenance of schools, and a secure visitor entry system led to a safer feeling in the school
- More research looking at a larger array of schools in different locations needs to be completed

Research Question

How safe do teachers feel in the context of CPTED and Harsh Target Hardening?

The Five Tenets of CPTED



References

